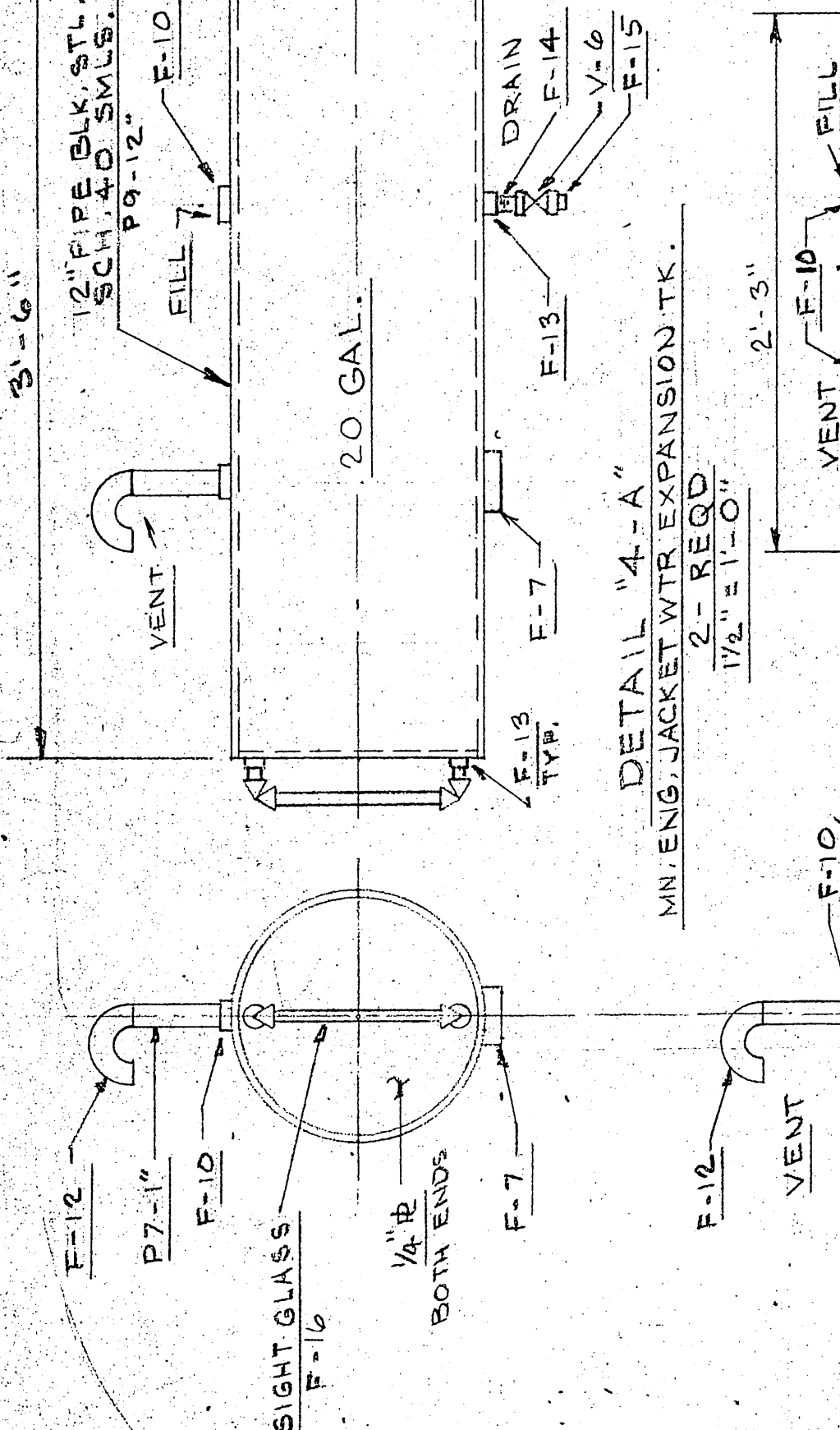


GENERAL NOTES

1. ALL PIPING AND VALVES SHALL BE MARKED SHOWING ITS SERVICE AND PARTICULAR LIQUID.
2. ALL PIPING SHALL BE COLOR CODED IN ACCORDANCE WITH THE REGULATION OF COLOR AND SHALL INDICATE THE DIRECTION OF FLOW AND SHALL BE LABELLED WITH SCREWS.
3. ALL LABELING SHALL BE THOROUGHLY CLEANED AND ATTACHED WITH SCREWS.
4. ALL OVERBOARD DISCHARGES LOCATED ON PORT SIDE.
5. OVERBOARD DISCHARGES TO BE KEPT STRAIGHT AND UNBENT.
6. SATEM W/OUT 20' TENDS ABOVE SHALL HAVE RISING STEPS OUTSIDE SCREW AND YOKE.
7. ALL PIPES SUBJECT TO MECHANICAL INJURY OR UNDUCE VIBRATION SHALL BE ADEQUATELY PROTECTED AND/OR SUPPORTED.
8. PIPING SHALL BE THOROUGHLY CLEANED AFTER TESTING.
9. ALL WELDING PROCEDURES SHALL BE IN ACCORDANCE WITH THE PROVISIONS OF THE FEDERAL REGISTER.
10. VOID 3-2245, 46 CFR 52.70-15.
11. DISCHARGES SHALL BE KEPT TO PORT LOCATED ABOVE ENGINES.

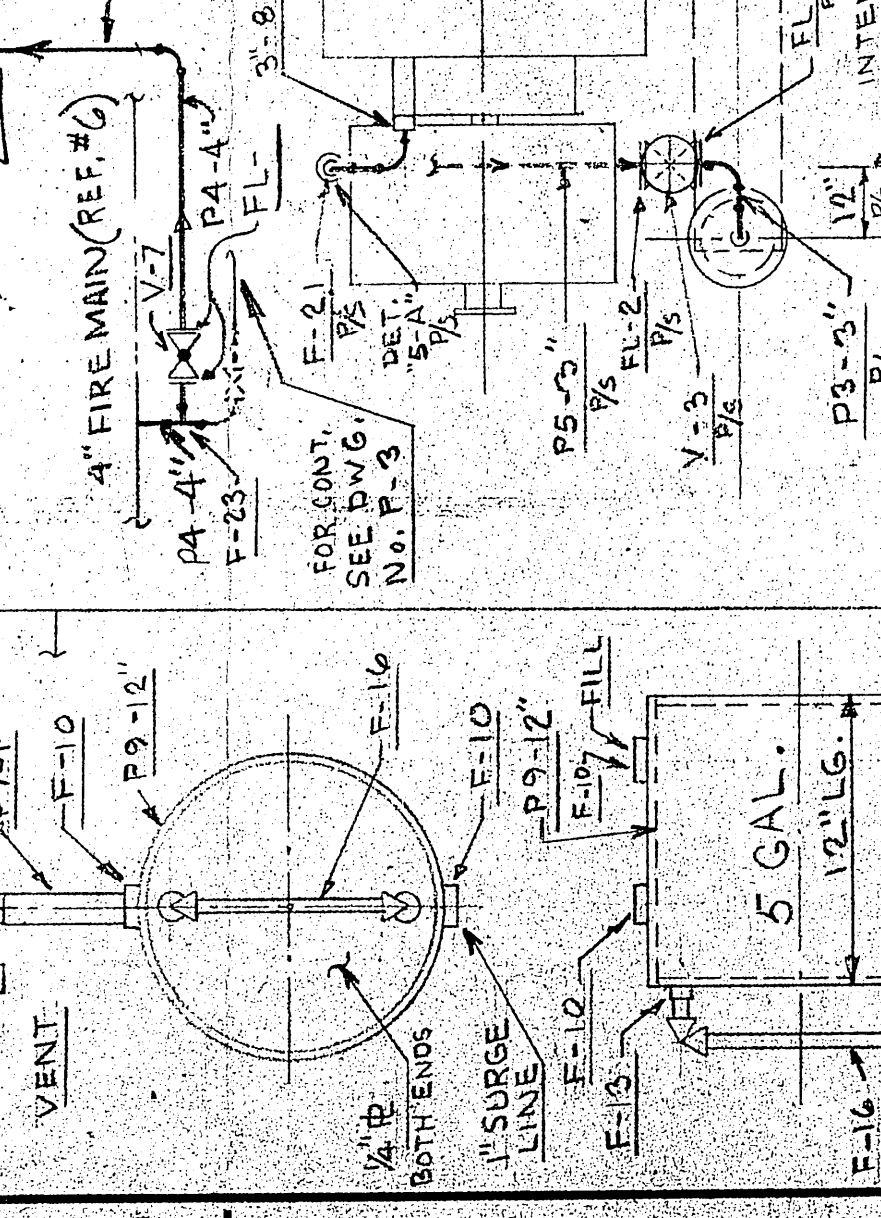
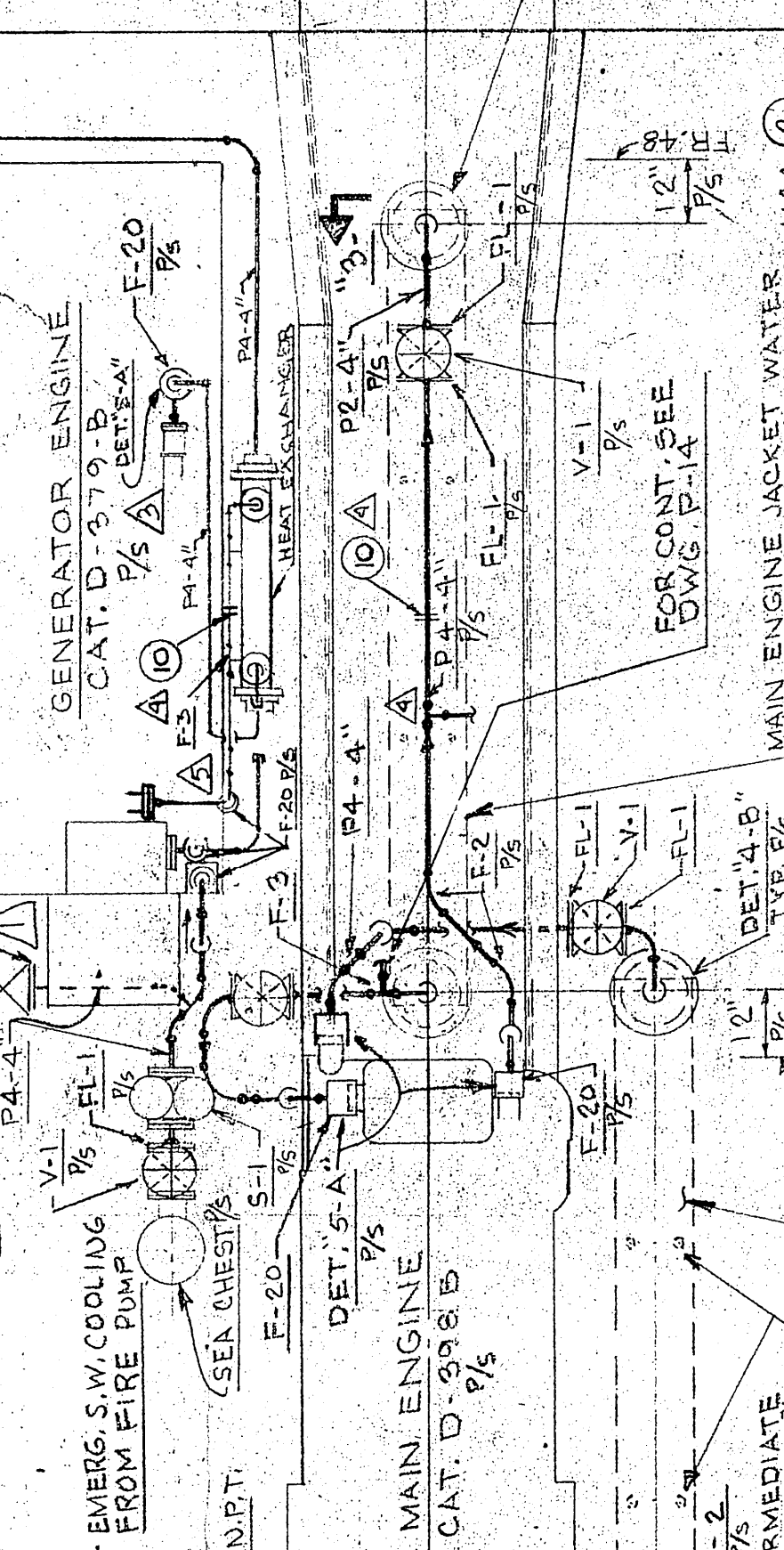
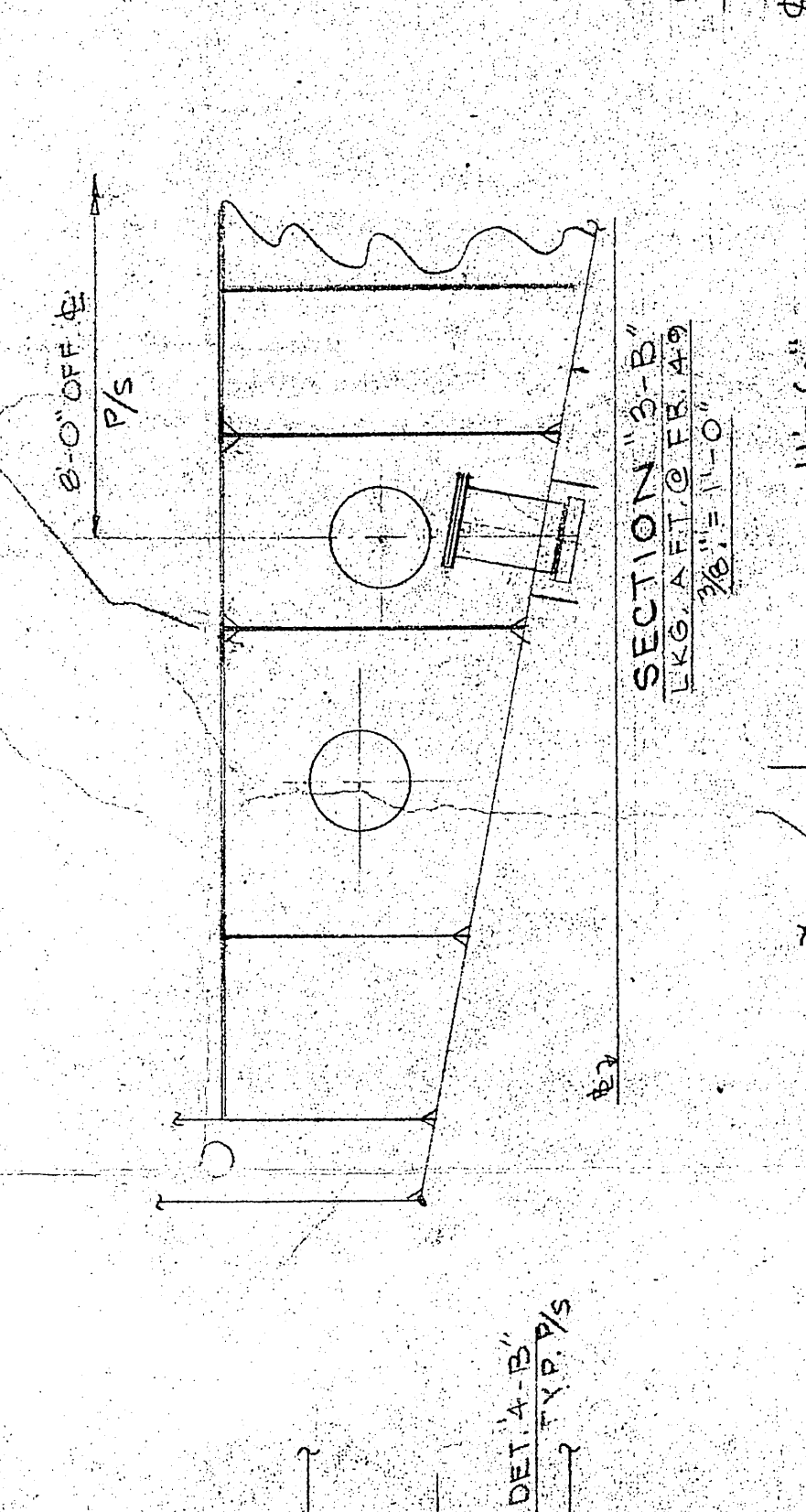
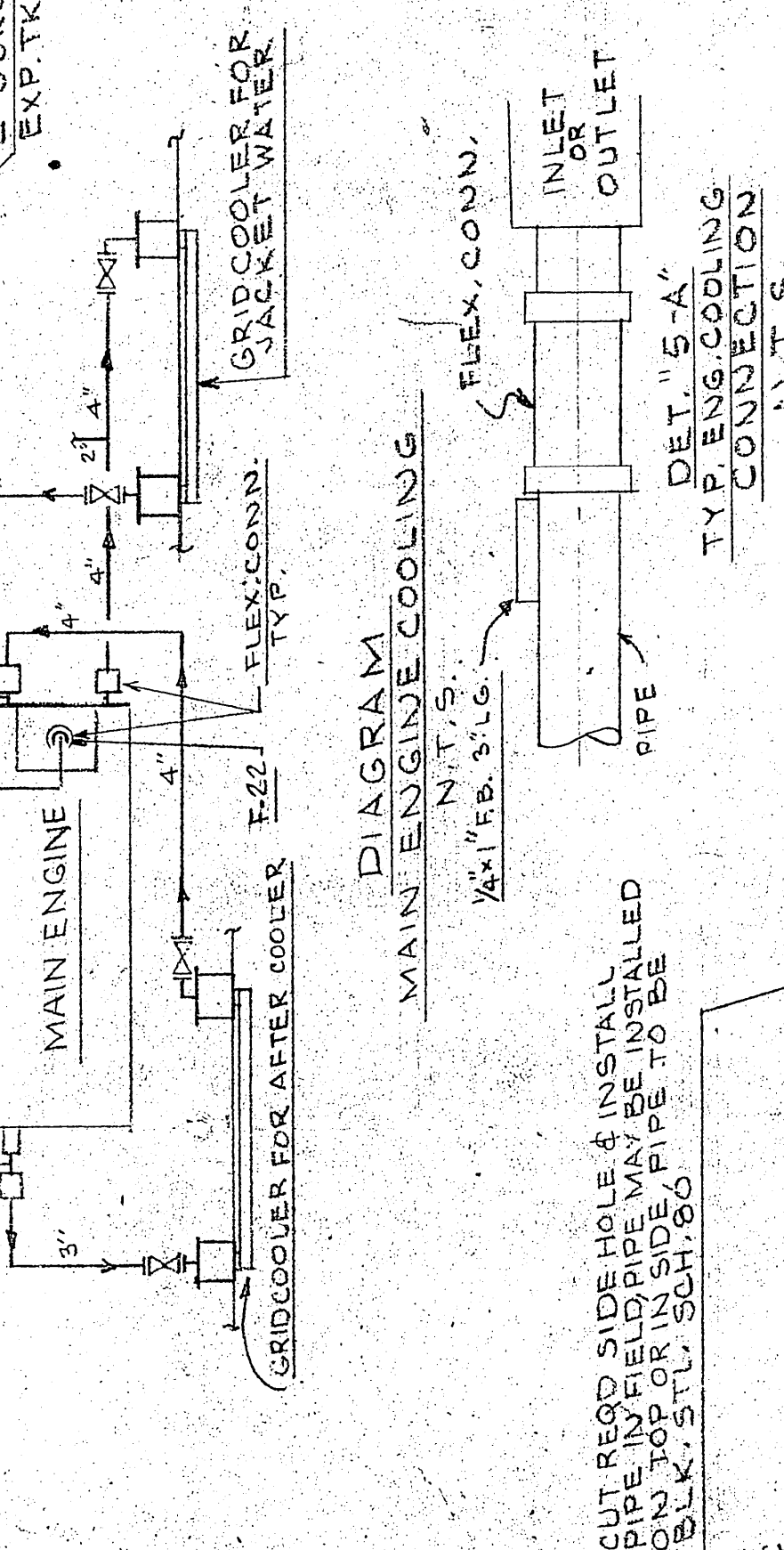
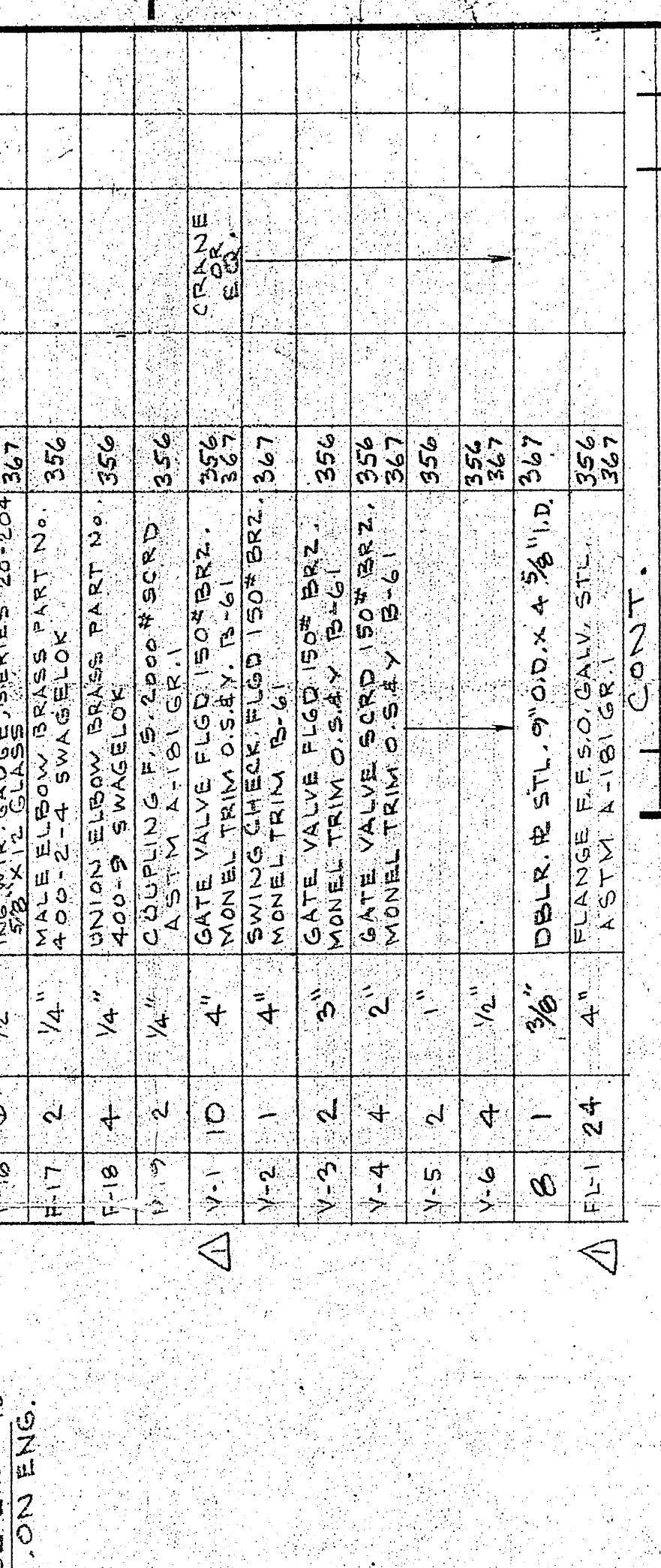
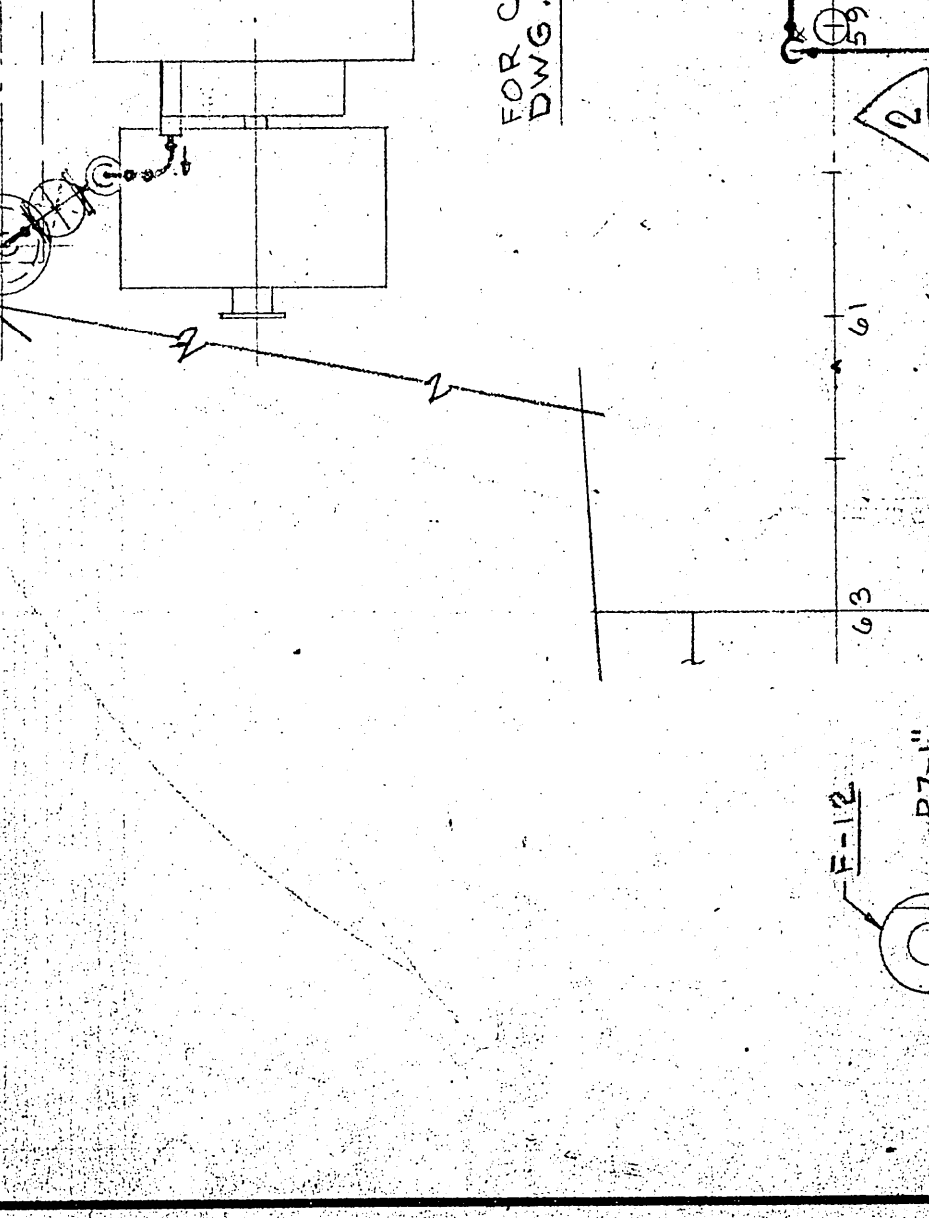
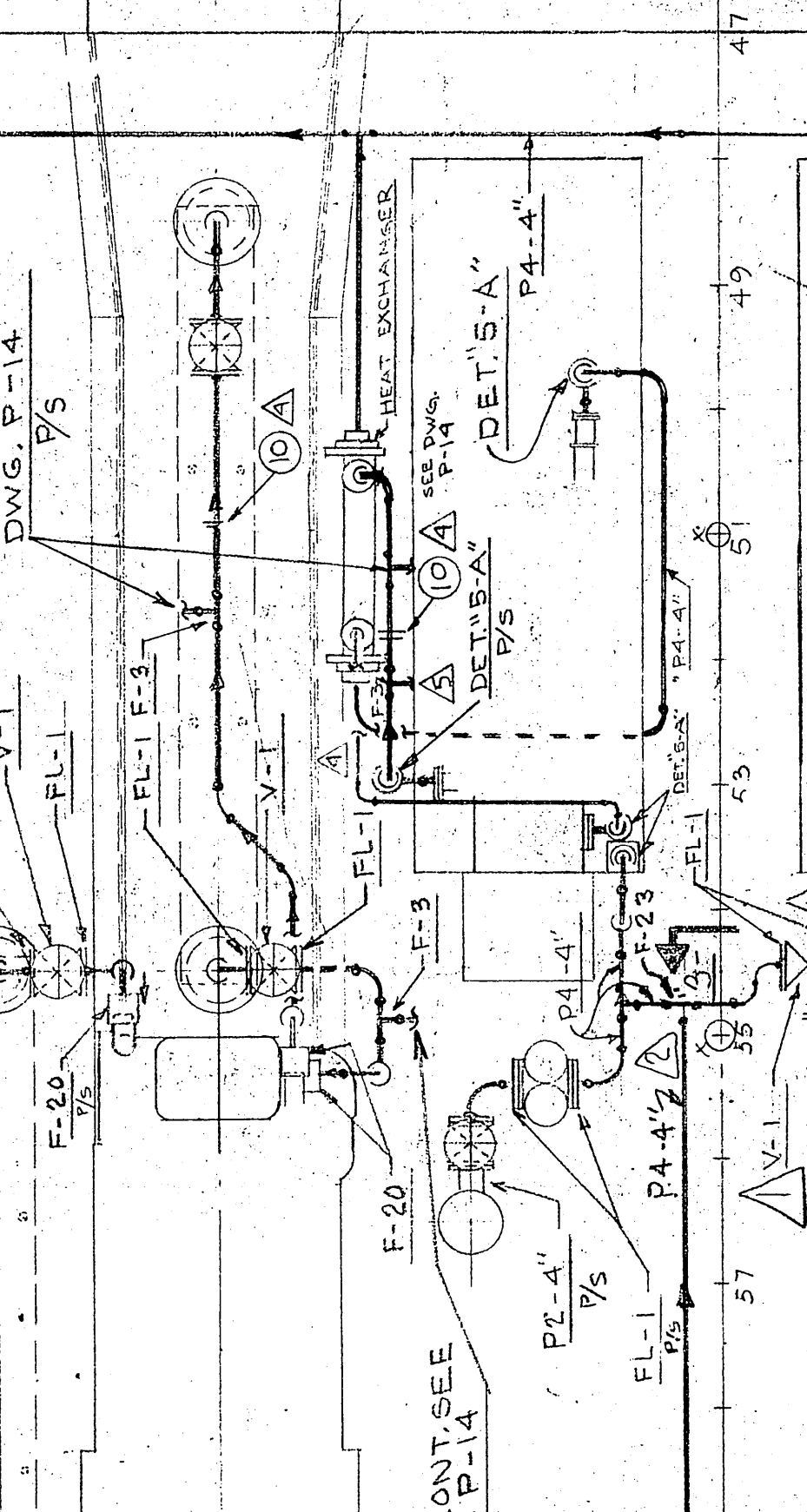
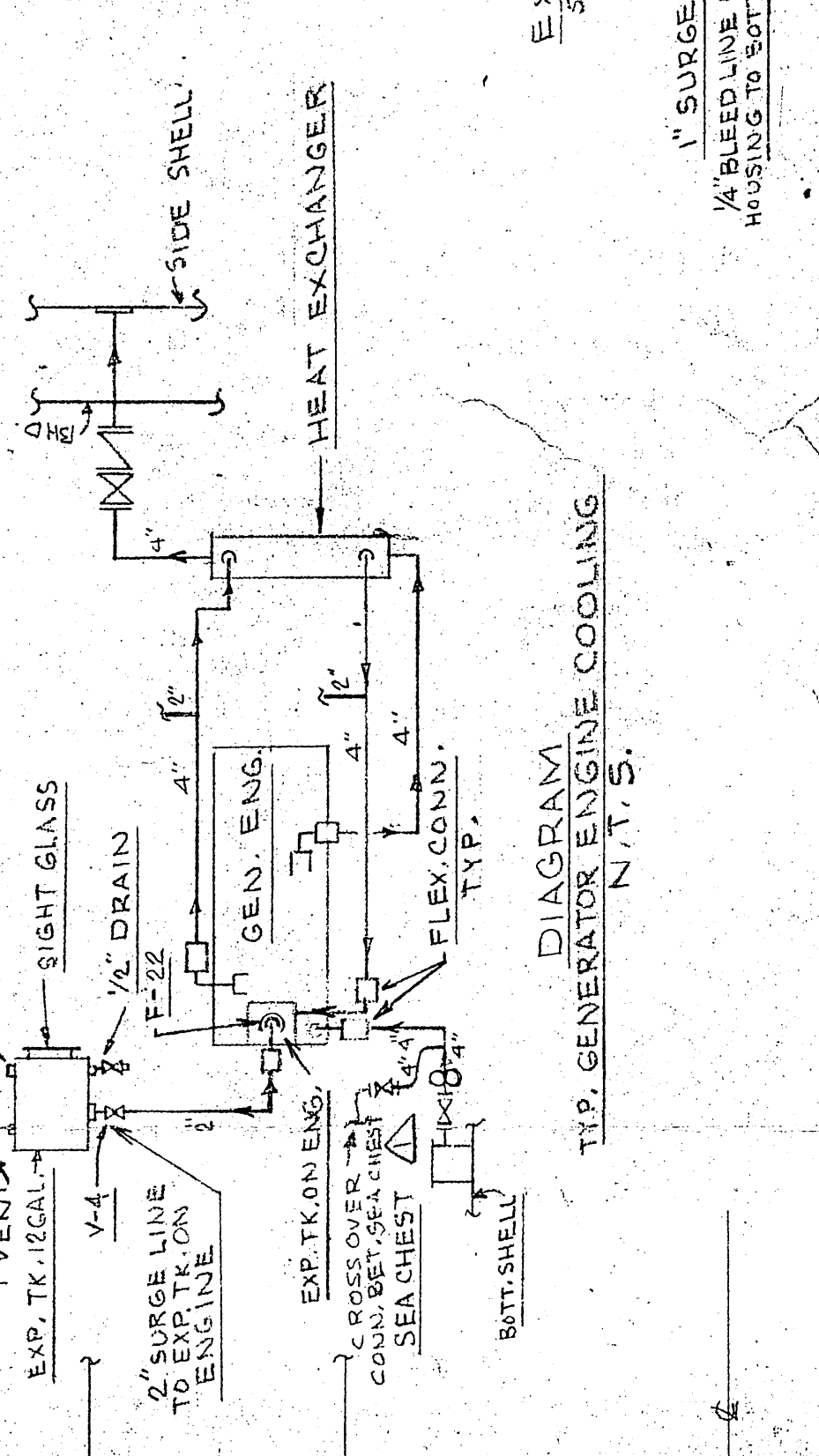
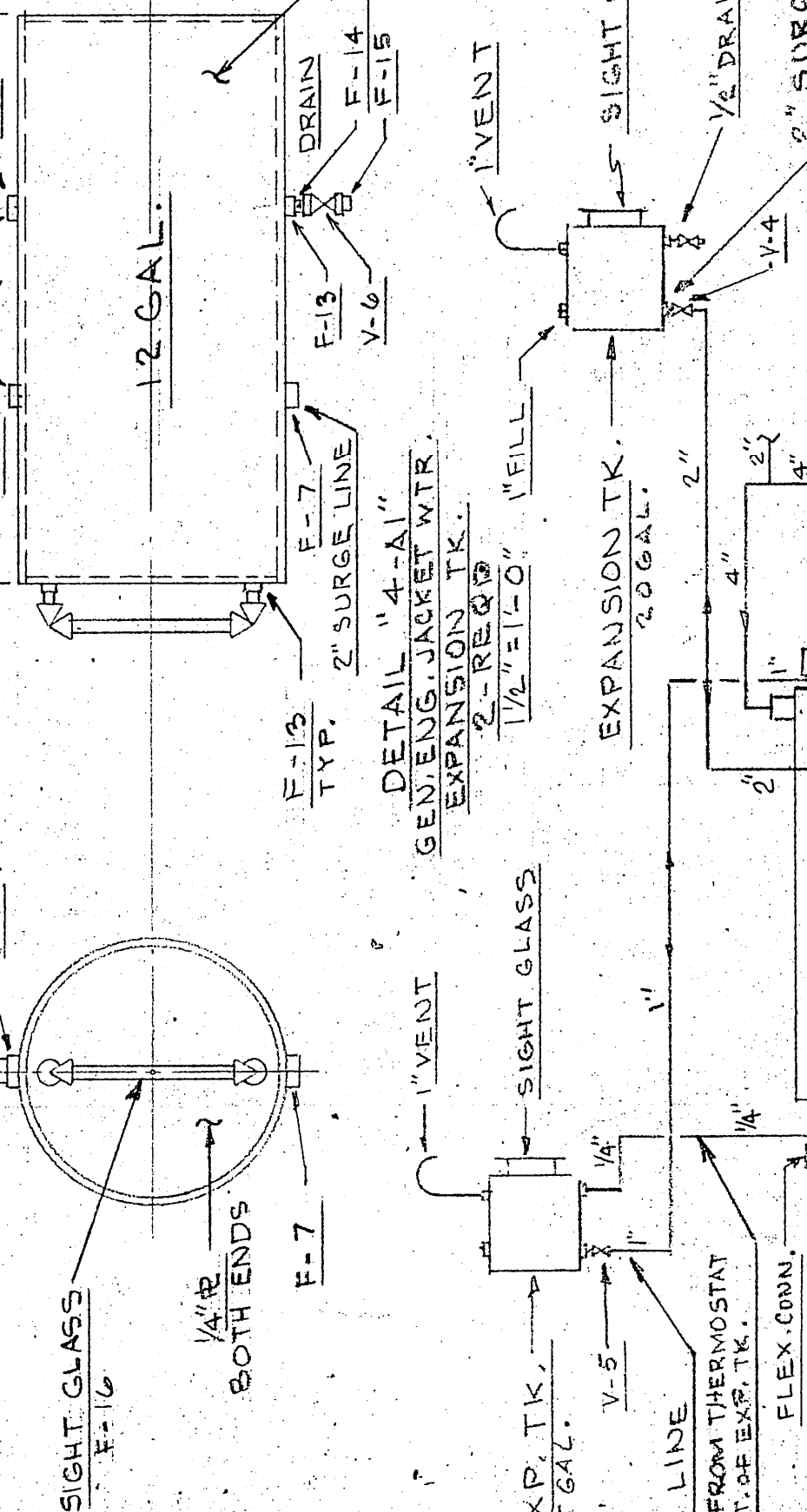
4	50 FT	1/2"	PLATE STL. (FOR EXP. TKS)	356
5	50 FT	1/2"	PLATE STL. (GRID COOLER GUARD)	367
6	50'	1/2" THK	ANGLE STL. (SIZE TO SUIT)	356
7	14'	1/2"	FLAT BAR STL. 3" WIDE	356
F-20	14'	4"	FLEX. COUPLER (FOR REF. 1)	356
F-21	2'	3"	#46.00-2-650	356
F-22	4'	2"	#66.00-2-400	367

FL-2	4	3"	FLANGE, F.F.S.O. GALV. STL.	356
S1	2	4"	GALV. EXP. STRAINER FLGD	367
G1	2.5	1/2" THK	GASKET GRANITE FOR FCJ. FLI	356
G2	4	1/2" THK	GASKET GRANITE FOR FC. NO.	356
G3	4	1/2" THK	GASKET GRANITE FOR FC.	356
G4	8	1/2" THK	NEOPRENE GASKET.	356
B1	2.16	3/8" x 3/16"	WASH. BOLT. SQ. HD. W/HEX. HD.	356
B2	64	5/8" x 1/4"	WASH. BOLT. SQ. HD. W/ NUT & LOCK	356
B3	16	3/8" - 10 - 1/2"	WASH. BOLT. HEX. HD. W/ SELF-LOCKING	356
1	8	3/8" THK	PLATE FLG. (FOR 1/2" DIA. HOLES)	356
2	8	3/8" THK	PLATE FLG. (FOR 3/4" DIA. HOLES)	356
F-23	4	4"	GRID COOLER FERROSTROM	356
V-7	1	4"	TEE BW. GALV. STL. SCH. 40	356
			MONEL TRIM 1/2" x 1/2" x 1/2"	357
			MONEL TRIM 1/2" x 1/2" x 1/2"	357



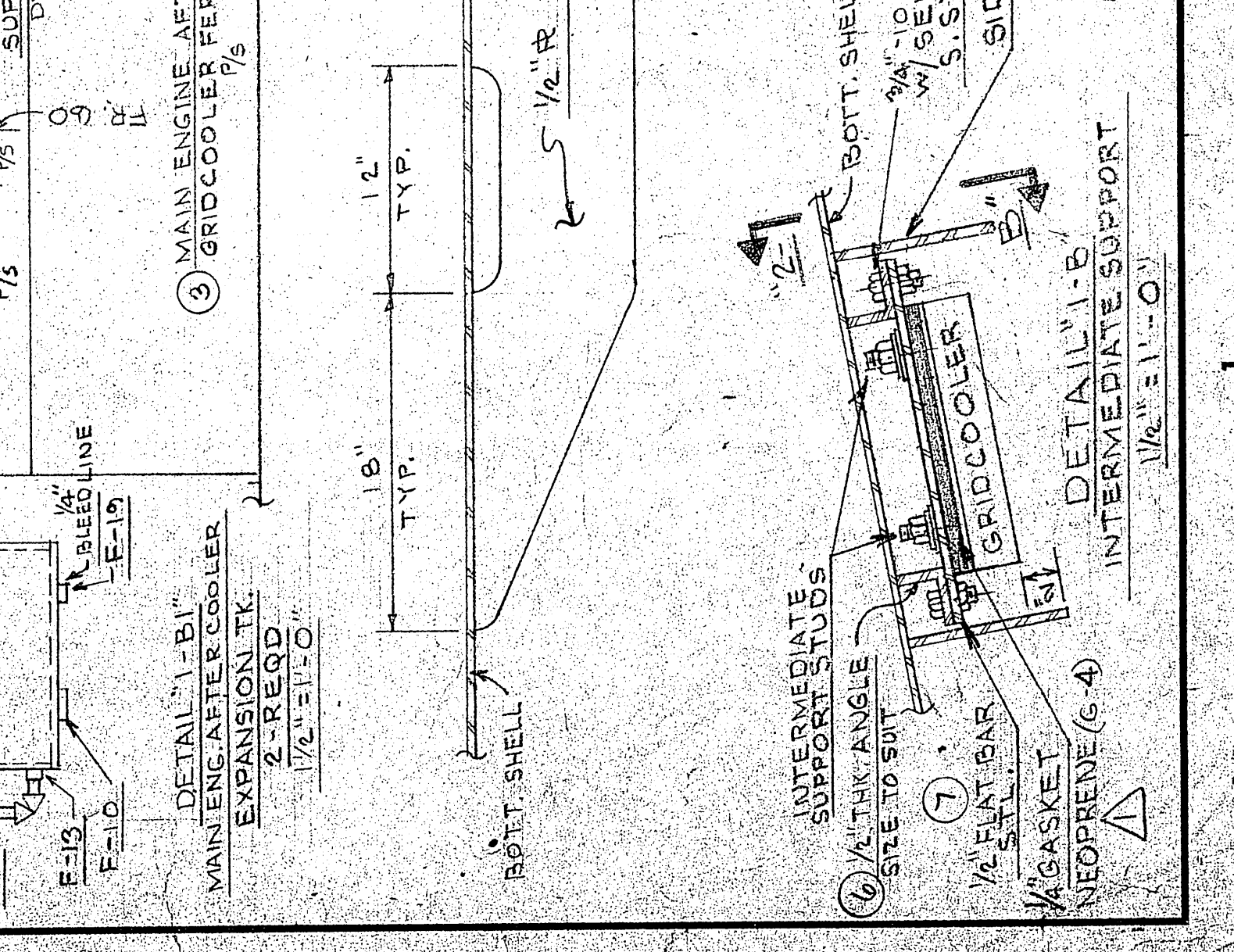
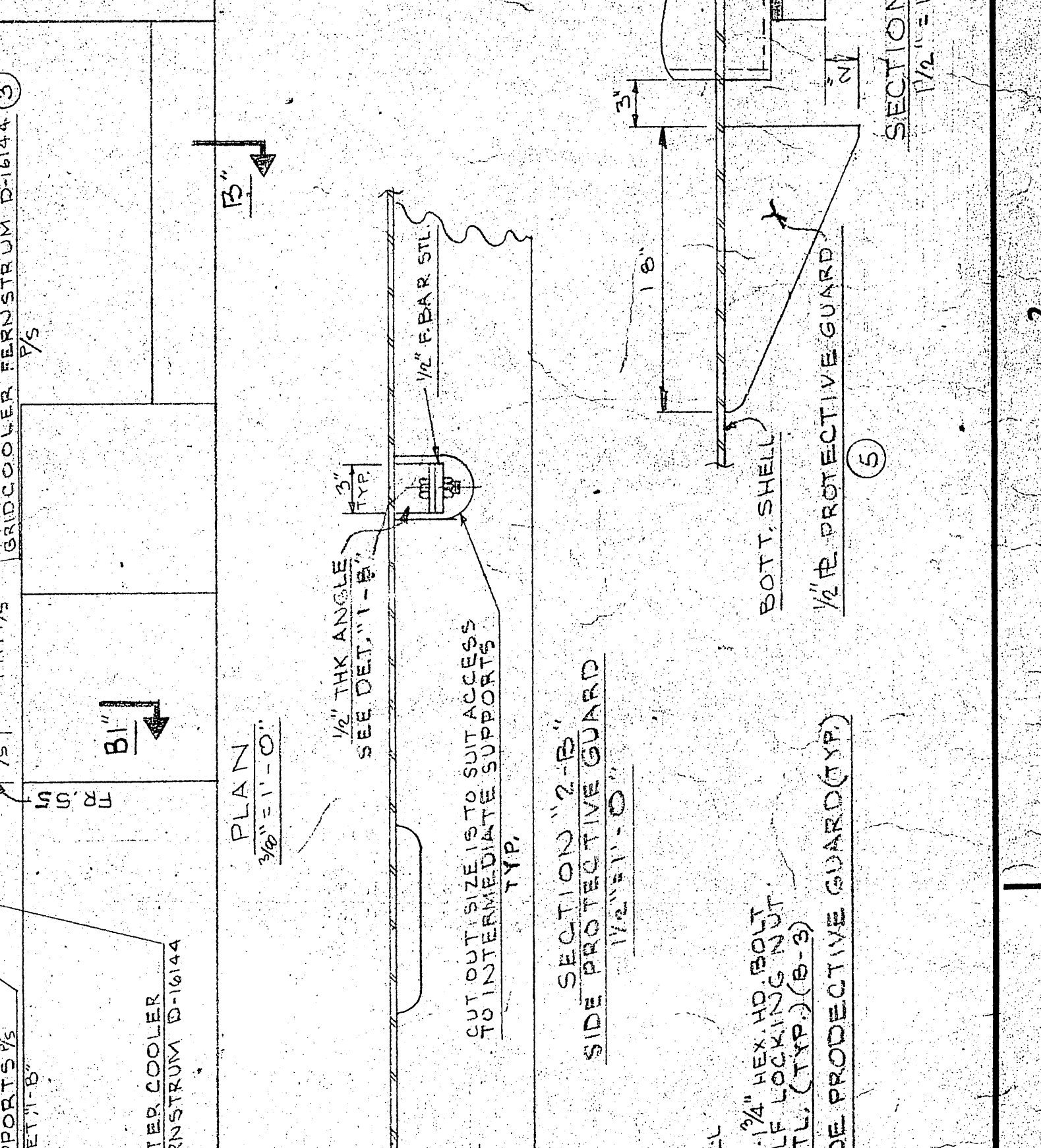
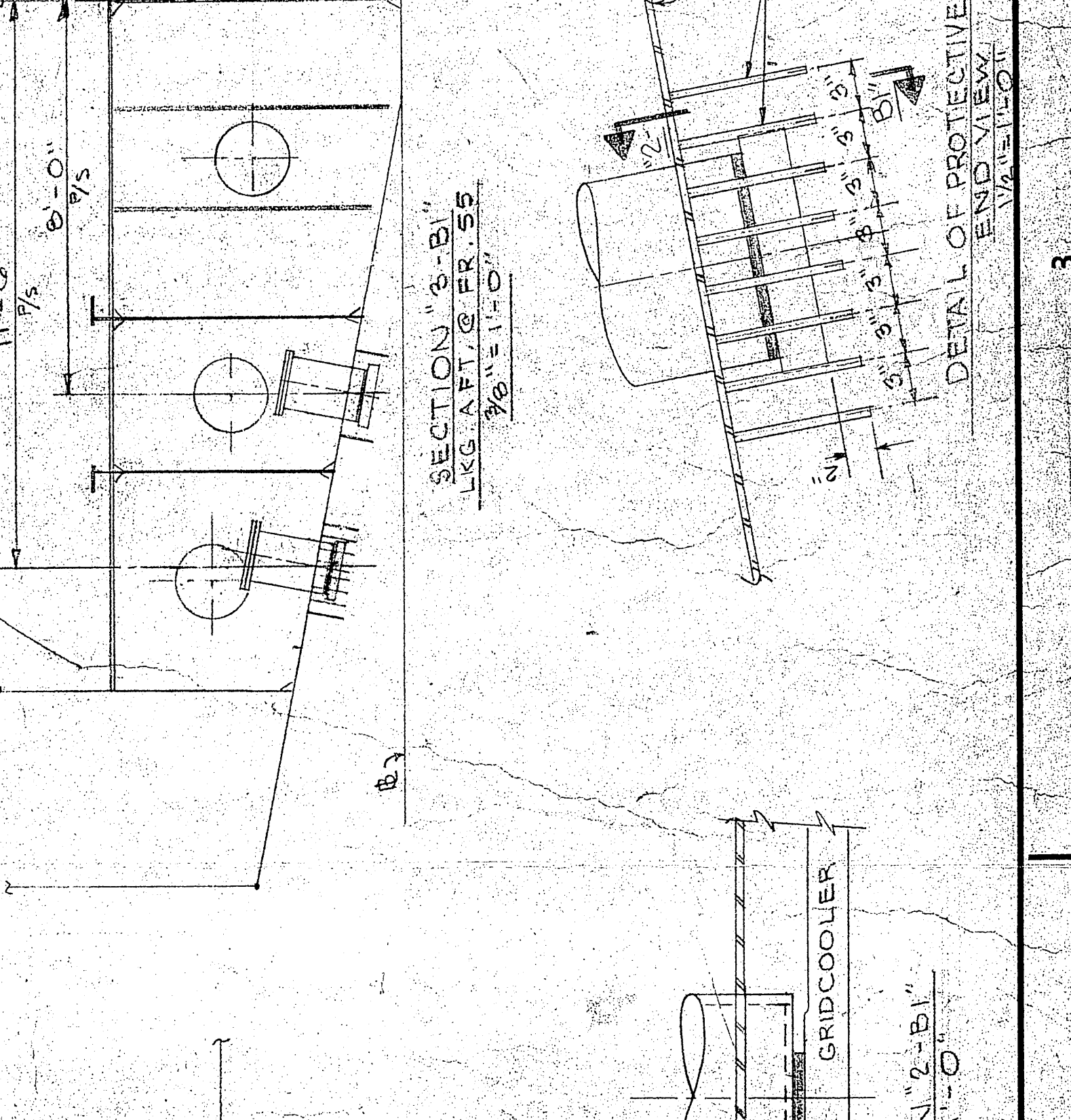
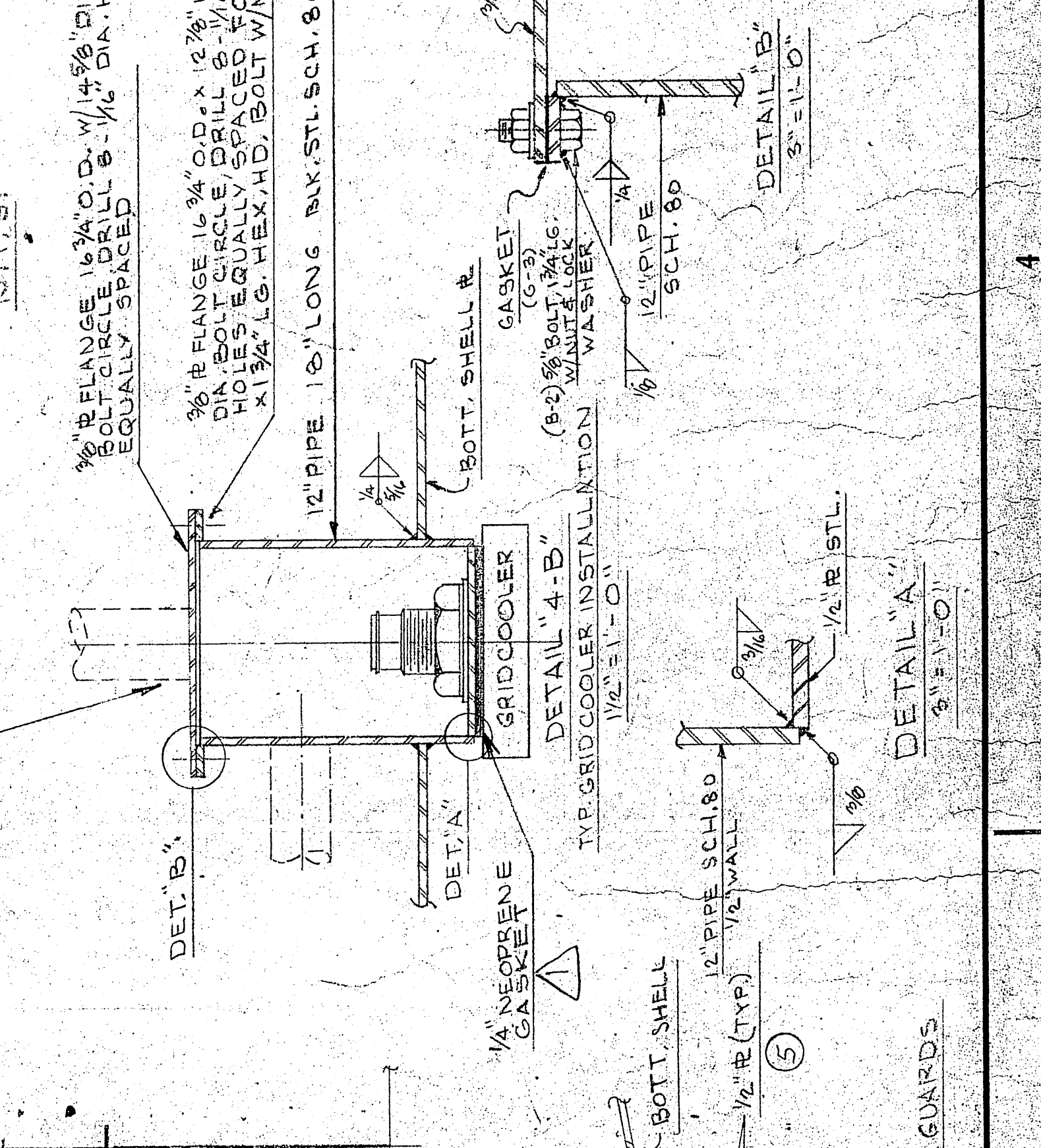
BILL OF MATERIAL

ITEM NO.	DESCRIPTION	QTY	SIZE	ITEM NO.	DESCRIPTION	QTY	SIZE	DATE
F-1	PIPE, BLK. STL. SCH. 40 SMLS.	12'	12"	356				
F-2	PIPE, BLK. STL. SCH. 40 SMLS.	16'	4"	356				
F-3	PIPE, GALV. STL. SCH. 40 SMLS.	4'	3"	356				
F-4	PIPE, GALV. STL. SCH. 40 SMLS.	21.5'	4"	356				
F-5	PIPE, GALV. STL. SCH. 40 SMLS.	10'	3"	356				
F-6	PIPE, GALV. STL. SCH. 40 SMLS.	4'	2"	356				
F-7	PIPE, GALV. STL. SCH. 40 SMLS.	4'	2"	356				
F-8	PIPE, GALV. STL. SCH. 40 SMLS.	4'	2"	356				
F-9	PIPE, GALV. STL. SCH. 40 SMLS.	4'	2"	356				
F-10	PIPE, GALV. STL. SCH. 40 SMLS.	15'	1"	356				
F-11	PIPE, GALV. STL. SCH. 40 SMLS.	2'	1"	356				
F-12	PIPE, GALV. STL. SCH. 40 SMLS.	6'	1"	356				
F-13	PIPE, GALV. STL. SCH. 40 SMLS.	16'	1/2"	356				
F-14	PIPE, GALV. STL. SCH. 40 SMLS.	4'	1/2"	356				
F-15	PIPE, GALV. STL. SCH. 40 SMLS.	4'	1/2"	356				
F-16	PIPE, GALV. STL. SCH. 40 SMLS.	6'	1/2"	356				
F-17	PIPE, GALV. STL. SCH. 40 SMLS.	2'	1/4"	356				
F-18	PIPE, GALV. STL. SCH. 40 SMLS.	4'	1/4"	356				
F-19	PIPE, GALV. STL. SCH. 40 SMLS.	2'	1/4"	356				
F-20	PIPE, GALV. STL. SCH. 40 SMLS.	13'	1"	356				
F-21	PIPE, GALV. STL. SCH. 40 SMLS.	2'	1"	356				
F-22	PIPE, GALV. STL. SCH. 40 SMLS.	4'	1"	356				
F-23	PIPE, GALV. STL. SCH. 40 SMLS.	8'	1"	356				
F-24	PIPE, GALV. STL. SCH. 40 SMLS.	9'	2"	356				
F-25	PIPE, GALV. STL. SCH. 40 SMLS.	12'	2"	356				
F-26	PIPE, GALV. STL. SCH. 40 SMLS.	6'	2"	356				
F-27	PIPE, GALV. STL. SCH. 40 SMLS.	4'	2"	356				
F-28	PIPE, GALV. STL. SCH. 40 SMLS.	4'	1"	356				
F-29	PIPE, GALV. STL. SCH. 40 SMLS.	2'	1"	356				
F-30	PIPE, GALV. STL. SCH. 40 SMLS.	13'	1"	356				
F-31	PIPE, GALV. STL. SCH. 40 SMLS.	2'	1"	356				
F-32	PIPE, GALV. STL. SCH. 40 SMLS.	6'	1"	356				
F-33	PIPE, GALV. STL. SCH. 40 SMLS.	16'	1/2"	356				
F-34	PIPE, GALV. STL. SCH. 40 SMLS.	4'	1/2"	356				
F-35	PIPE, GALV. STL. SCH. 40 SMLS.	4'	1/2"	356				
F-36	PIPE, GALV. STL. SCH. 40 SMLS.	6'	1/2"	356				
F-37	PIPE, GALV. STL. SCH. 40 SMLS.	2'	1/4"	356				
F-38	PIPE, GALV. STL. SCH. 40 SMLS.	4'	1/4"	356				
F-39	PIPE, GALV. STL. SCH. 40 SMLS.	2'	1/4"	356				
F-40	PIPE, GALV. STL. SCH. 40 SMLS.	13'	1"	356				
F-41	PIPE, GALV. STL. SCH. 40 SMLS.	2'	1"	356				
F-42	PIPE, GALV. STL. SCH. 40 SMLS.	4'	1"	356				
F-43	PIPE, GALV. STL. SCH. 40 SMLS.	8'	1"	356				
F-44	PIPE, GALV. STL. SCH. 40 SMLS.	4'	1"	356				
F-45	PIPE, GALV. STL. SCH. 40 SMLS.	4'	1/2"	356				
F-46	PIPE, GALV. STL. SCH. 40 SMLS.	6'	1/2"	356				
F-47	PIPE, GALV. STL. SCH. 40 SMLS.	2'	1/4"	356				
F-48	PIPE, GALV. STL. SCH. 40 SMLS.	4'	1/4"	356				
F-49	PIPE, GALV. STL. SCH. 40 SMLS.	2'	1/4"	356				
F-50	PIPE, GALV. STL. SCH. 40 SMLS.	13'	1"	356				
F-51	PIPE, GALV. STL. SCH. 40 SMLS.	2'	1"	356				
F-52	PIPE, GALV. STL. SCH. 40 SMLS.	4'	1"	356				
F-53	PIPE, GALV. STL. SCH. 40 SMLS.	8'	1"	356				
F-54	PIPE, GALV. STL. SCH. 40 SMLS.	4'	1"	356				
F-55	PIPE, GALV. STL. SCH. 40 SMLS.	4'	1/2"	356				
F-56	PIPE, GALV. STL. SCH. 40 SMLS.	6'	1/2"	356				
F-57	PIPE, GALV. STL. SCH. 40 SMLS.	2'	1/4"	356				
F-58	PIPE, GALV. STL. SCH. 40 SMLS.	4'	1/4"	356				
F-59	PIPE, GALV. STL. SCH. 40 SMLS.	2'	1/4"	356				
F-60	PIPE, GALV. STL. SCH. 40 SMLS.	13'	1"	356				
F-61	PIPE, GALV. STL. SCH. 40 SMLS.	2'	1"	356				
F-62	PIPE, GALV. STL. SCH. 40 SMLS.	4'	1"	356				
F-63	PIPE, GALV. STL. SCH. 40 SMLS.	8'	1"	356				
F-64	PIPE, GALV. STL. SCH. 40 SMLS.	4'	1"	356				
F-65	PIPE, GALV. STL. SCH. 40 SMLS.	4'	1/2"	356				
F-66	PIPE, GALV. STL. SCH. 40 SMLS.	6'	1/2"	356				
F-67	PIPE, GALV. STL. SCH. 40 SMLS.	2'	1/4"	356				
F-68	PIPE, GALV. STL. SCH. 40 SMLS.	4'	1/4"	356				
F-69	PIPE, GALV. STL. SCH. 40 SMLS.	2'	1/4"	356				
F-70	PIPE, GALV. STL. SCH. 40 SMLS.	13'	1"	356				
F-71	PIPE, GALV. STL. SCH. 40 SMLS.	2'	1"	356				
F-72	PIPE, GALV. STL. SCH. 40 SMLS.	4'	1"	356				
F-73	PIPE, GALV. STL. SCH. 40 SMLS.	8'	1"	356				
F-74	PIPE, GALV. STL. SCH. 40 SMLS.	4'	1"	356				
F-75	PIPE, GALV. STL. SCH. 40 SMLS.	4'	1/2"	356				
F-76	PIPE, GALV. STL. SCH. 40 SMLS.	6'	1/2"	356				
F-77	PIPE, GALV. STL. SCH. 40 SMLS.	2'	1/4"	356				
F-78	PIPE, GALV. STL. SCH. 40 SMLS.	4'	1/4"	356				
F-79	PIPE, GALV. STL. SCH. 40 SMLS.	2'	1/4"	356				
F-80	PIPE, GALV. STL. SCH. 40 SMLS.	13'	1"	356				



REVISIONS

NO.	DESCRIPTION	DATE	BY
1	REV. PIPE CONNECTIONS TO HEAT EXCHANGER.	7/27/72	WJ
2	REV. PUMP, PA-F1, F-23 & F-7 TO BILL OF MAT. ADDED SW. COOLING LINE FROM FIRE MAIN TO CROSSOVER CONNECTION. REV. MAIN TO CROSSOVER CONNECTION. REV. MAIN TO CROSSOVER CONNECTION.	8/27/72	WJ
3	ADDED SW. COOLING LINE FROM FIRE MAIN TO CROSSOVER CONNECTION. REV. MAIN TO CROSSOVER CONNECTION. REV. MAIN TO CROSSOVER CONNECTION.	8/27/72	WJ
4	ADDED SW. COOLING LINE FROM FIRE MAIN TO CROSSOVER CONNECTION. REV. MAIN TO CROSSOVER CONNECTION. REV. MAIN TO CROSSOVER CONNECTION.	8/27/72	WJ
5	AS BUILT		



OFFICE COPY

U.S. NAVAL SHIP SYSTEMS COMMAND
WASHINGTON, D.C. 20380

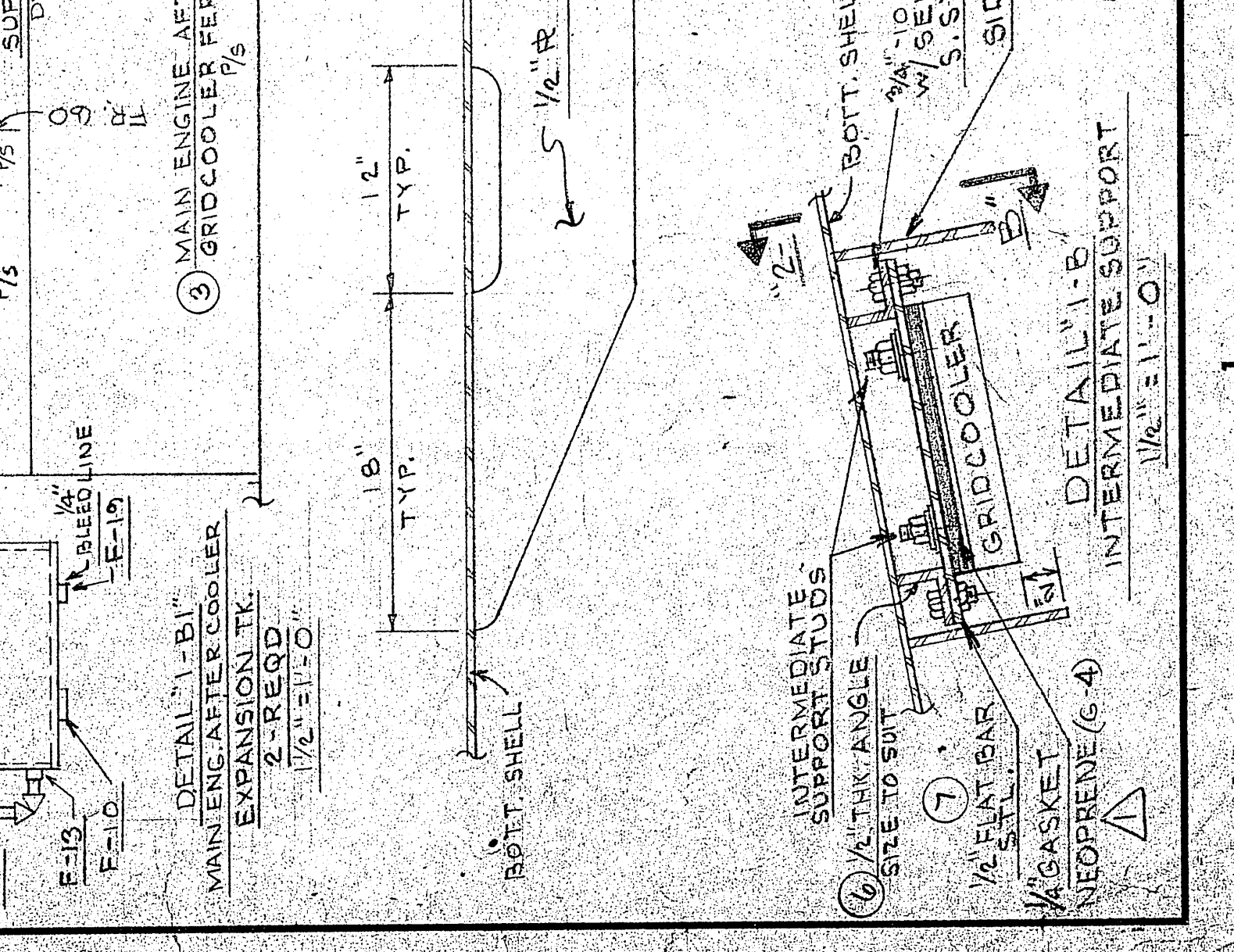
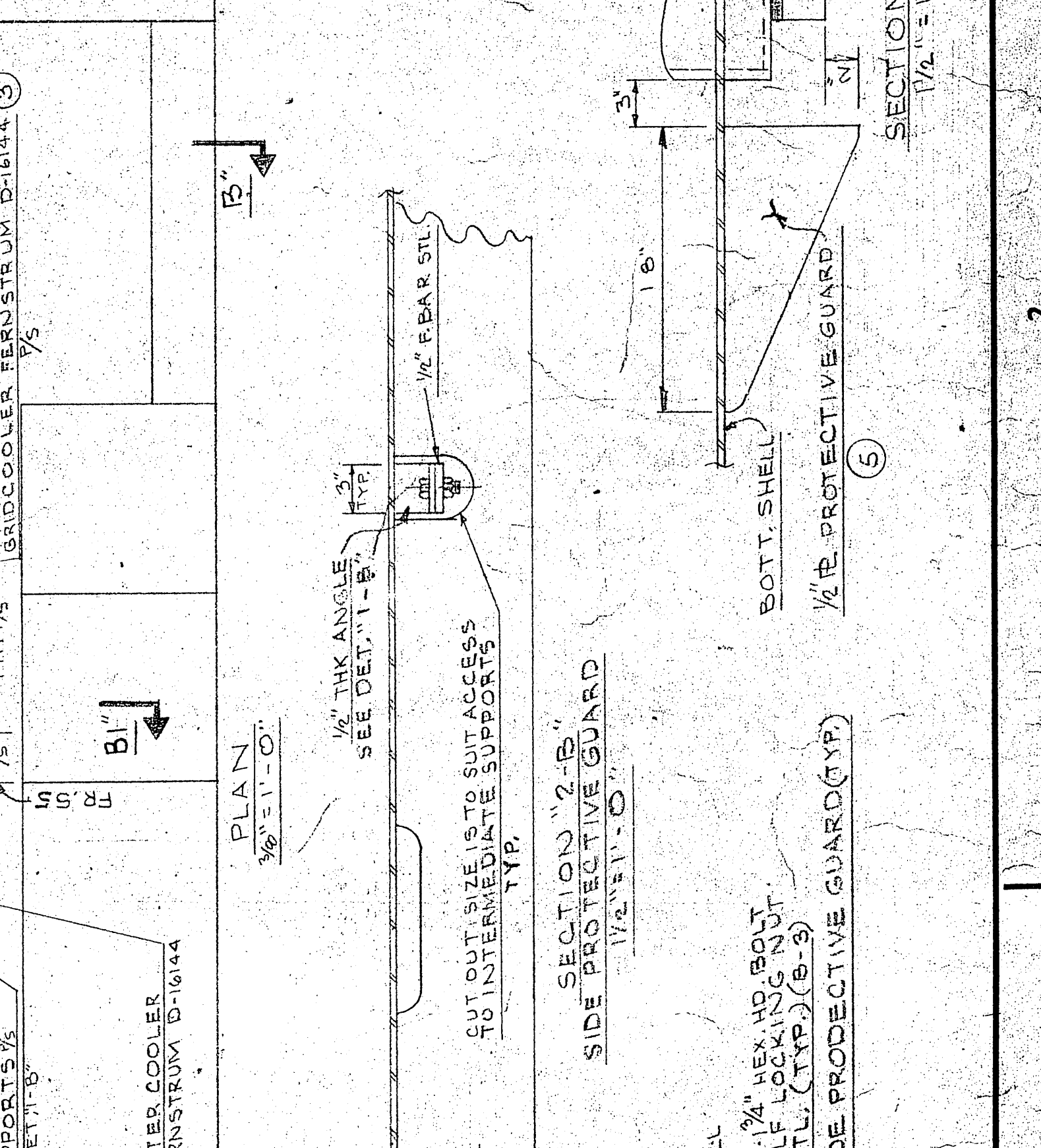
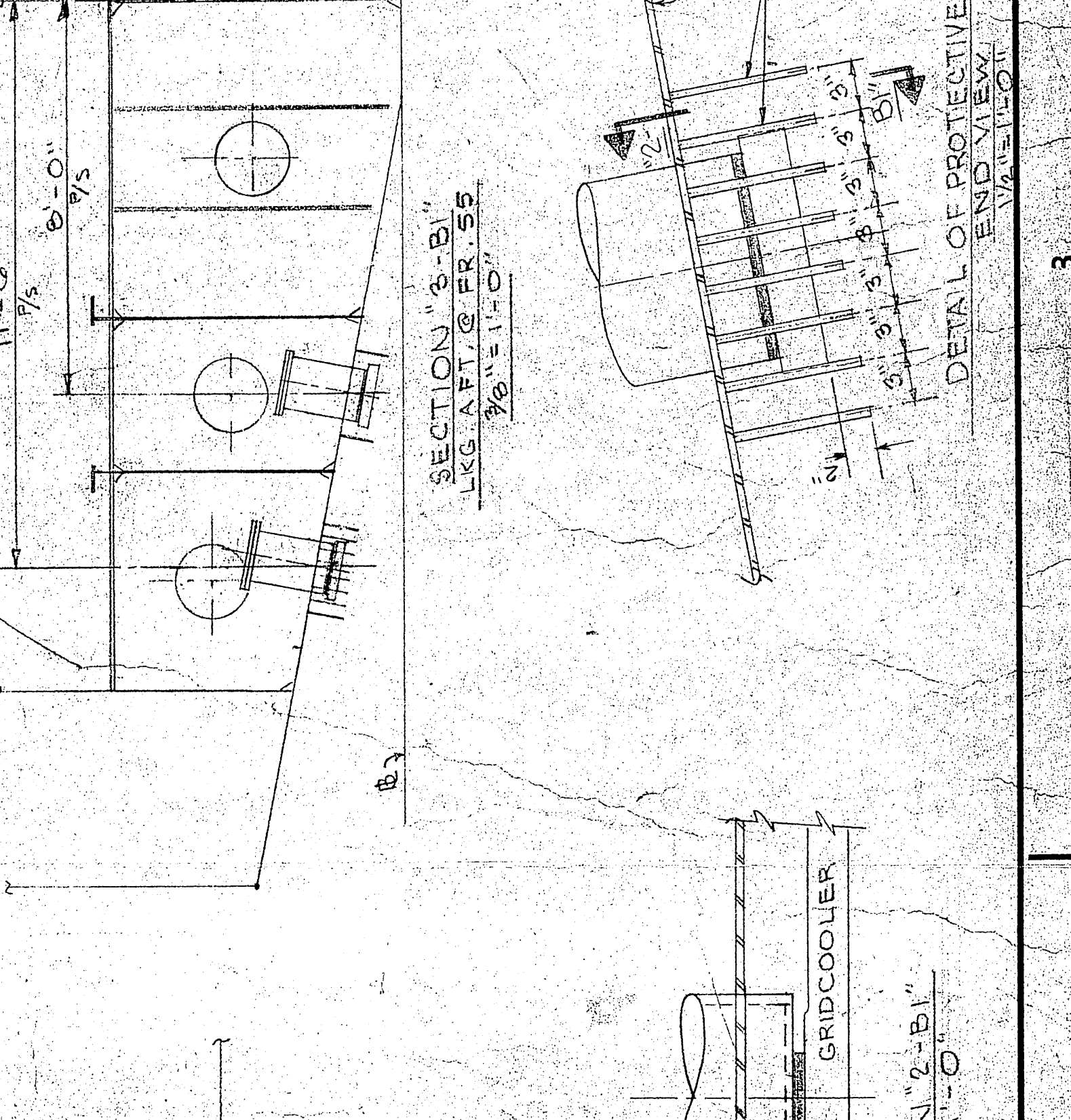
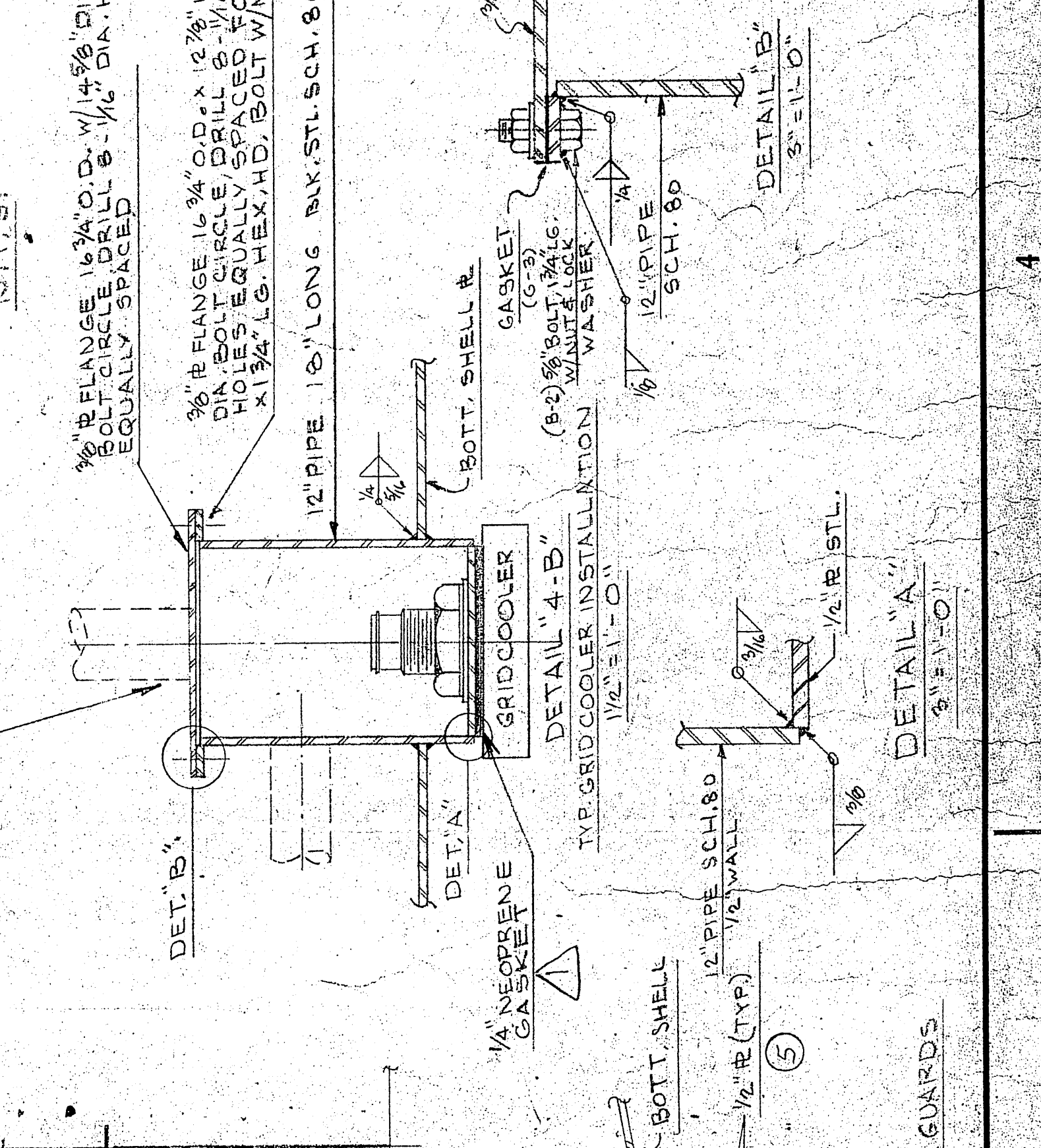
OCEANOGRAPHIC RESEARCH SHIP
AGOR (UTILITY) CLASS

HALTER MARINE SERVICES, INC.
P.O. BOX 29246 NEW ORLEANS, LA. 70126

MAIN & AUXILIARY ENGINE COOLING
DWG. NO. P-8
DATE 11-11-72
DRAWN BY BEATUCCI
CHECKED BY JOWLES
HALTER 2187
HULL NO. 376
JOB NO. 2188
NAVSHIPS NO. 9809 21-209-001
REV. 4

REFERENCES

No.	Title	Scale
1	MACHINERY ARRANGEMENT	M/S
2	SCANTLING PLAN	M/S
3	SEA CHESTS	M/S
4	ENGINE FOUNDATION	M/S
5	EVAPORATOR PIPING	M/S
6	FIRE, BILGE & BALLAST PIPING	M/S



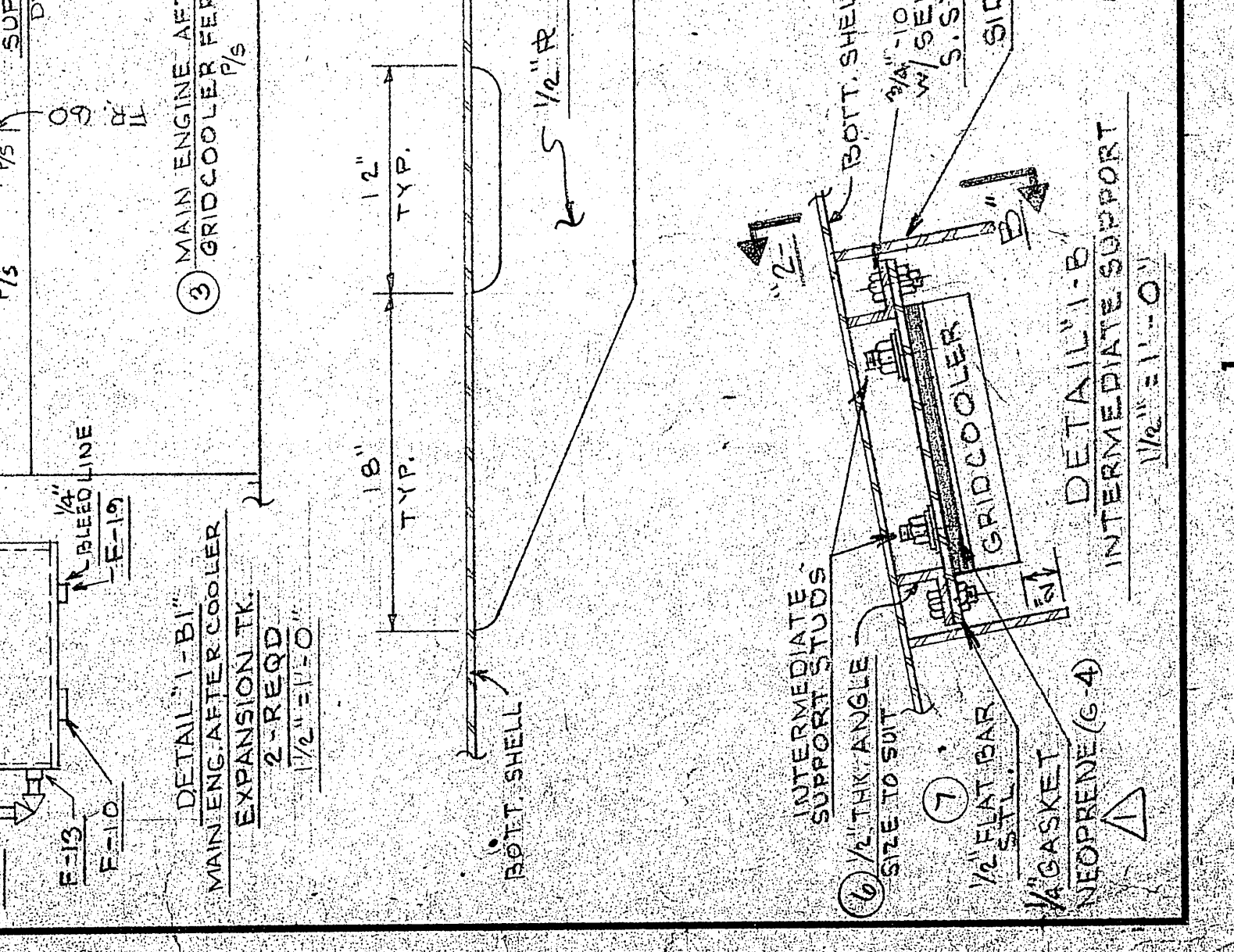
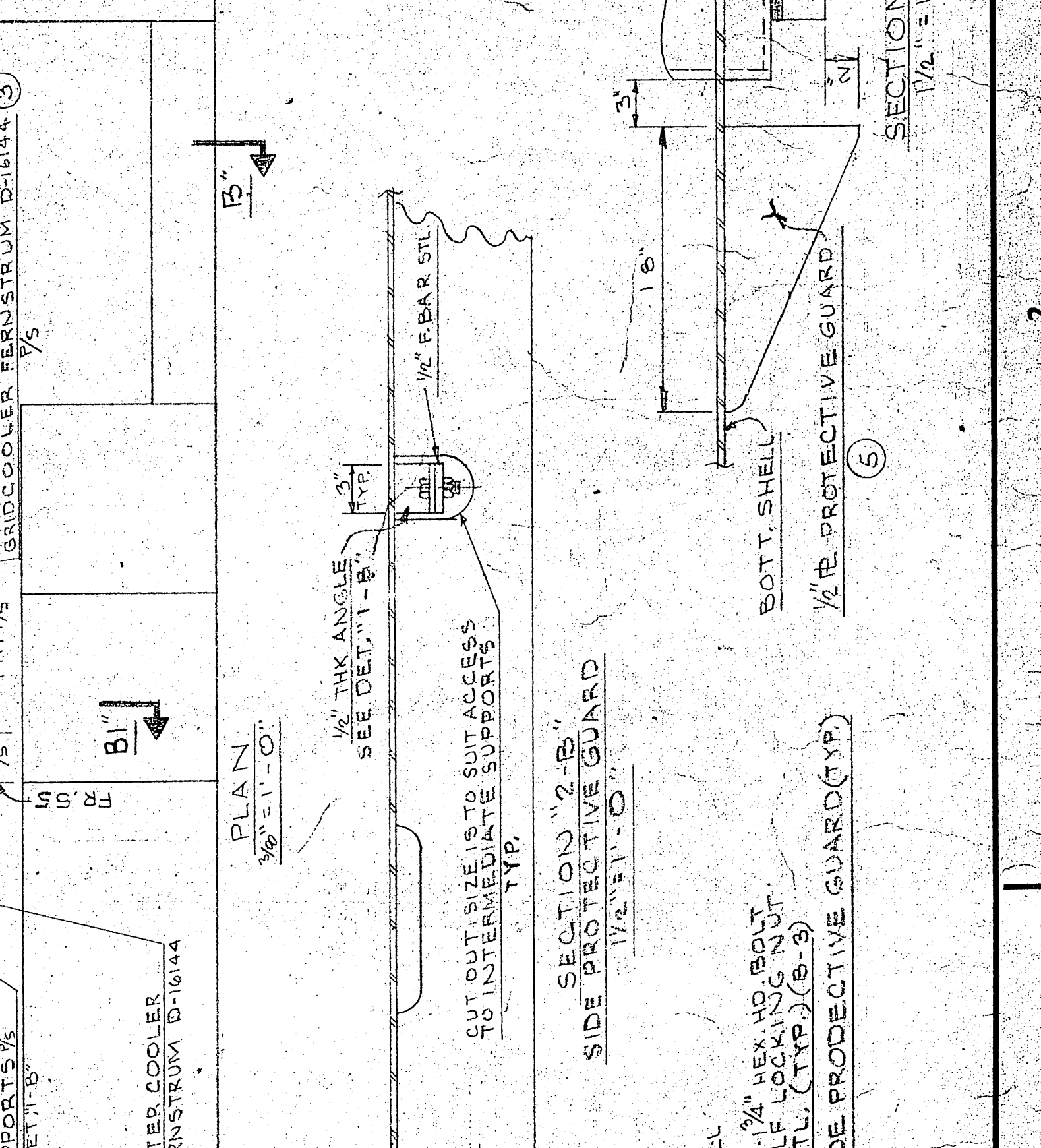
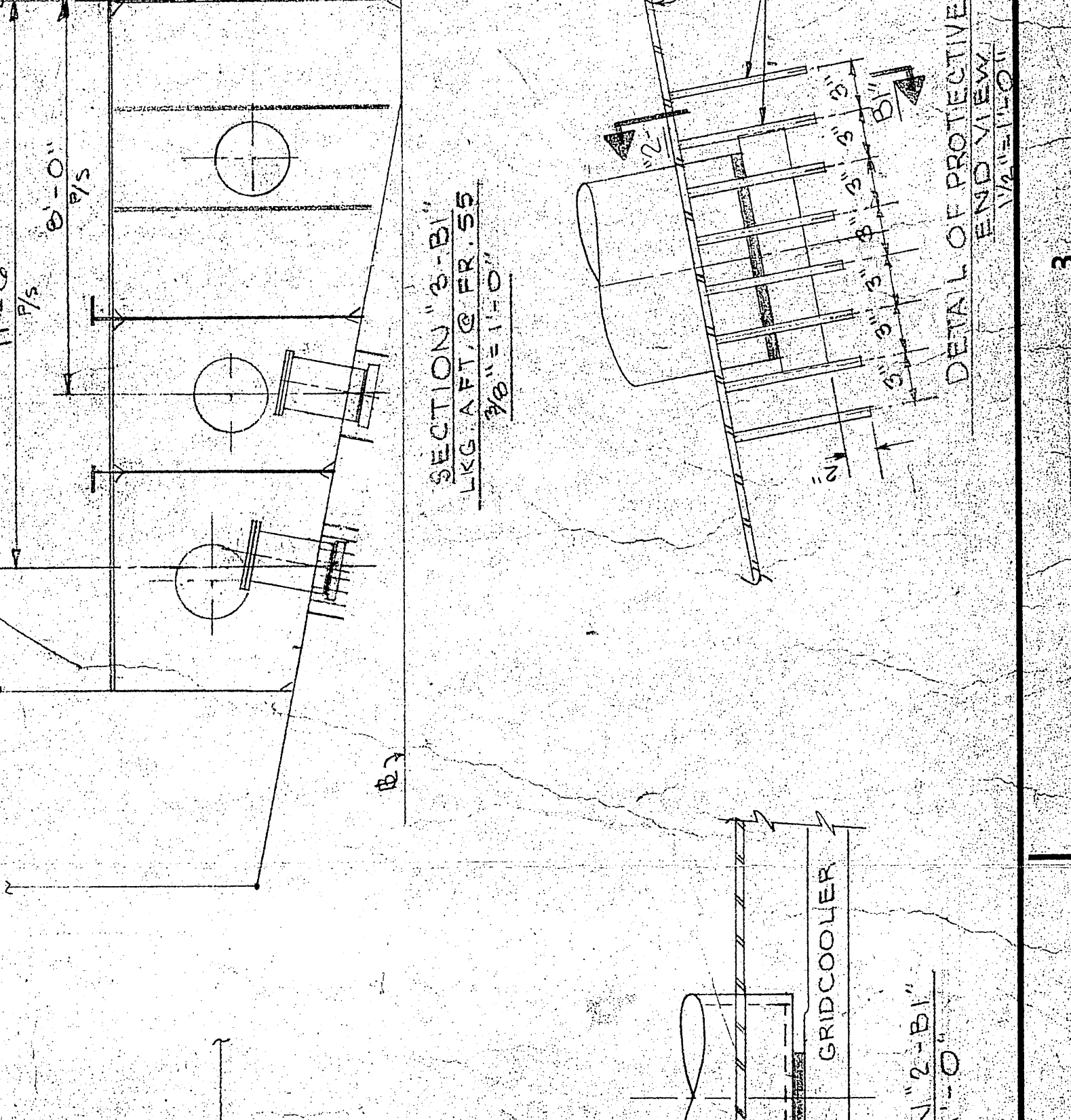
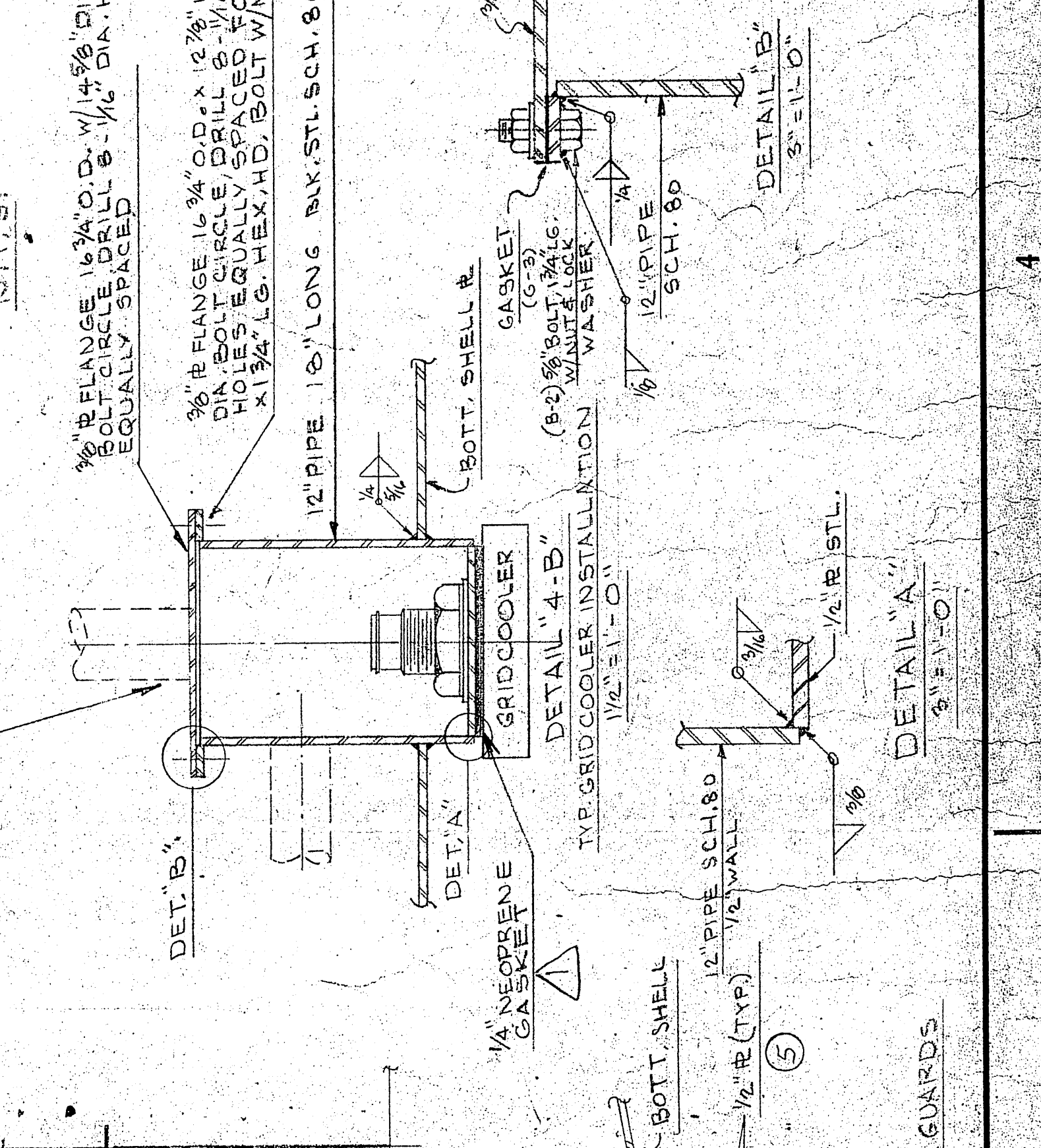
APPROVALS

U.S. NAVAL SHIP SYSTEMS COMMAND
WASHINGTON, D.C. 20380

OFFICE COPY

REVISIONS

NO.	DESCRIPTION	DATE	BY
1	REV. PIPE CONNECTIONS TO HEAT EXCHANGER.	7/27/72	WJ
2	REV. PUMP, PA-F1, F-23 & F-7 TO BILL OF MAT. ADDED SW. COOLING LINE FROM FIRE MAIN TO CROSSOVER CONNECTION. REV. MAIN TO CROSSOVER CONNECTION. REV. MAIN TO CROSSOVER CONNECTION.	8/27/72	WJ
3	ADDED SW. COOLING LINE FROM FIRE MAIN TO CROSSOVER CONNECTION. REV. MAIN TO CROSSOVER CONNECTION. REV. MAIN TO CROSSOVER CONNECTION.	8/27/72	WJ
4	ADDED SW. COOLING LINE FROM FIRE MAIN TO CROSSOVER CONNECTION. REV. MAIN TO CROSSOVER CONNECTION. REV. MAIN TO CROSSOVER CONNECTION.	8/27/72	WJ
5	AS BUILT		



APPROVALS

U.S. NAVAL SHIP SYSTEMS COMMAND
WASHINGTON, D.C. 20380

OFFICE COPY

REVISIONS

NO.	DESCRIPTION	DATE	BY
1	REV. PIPE CONNECTIONS TO HEAT EXCHANGER.	7/27/72	WJ
2	REV. PUMP, PA-F1, F-23 & F-7 TO BILL OF MAT. ADDED SW. COOLING LINE FROM FIRE MAIN TO CROSSOVER CONNECTION. REV. MAIN TO CROSSOVER CONNECTION. REV. MAIN TO CROSSOVER CONNECTION.	8/27/72	WJ
3	ADDED SW. COOLING LINE FROM FIRE MAIN TO CROSSOVER CONNECTION. REV. MAIN TO CROSSOVER CONNECTION. REV. MAIN TO CROSSOVER CONNECTION.	8/27/72	WJ
4	ADDED SW. COOLING LINE FROM FIRE MAIN TO CROSSOVER CONNECTION. REV. MAIN TO CROSSOVER CONNECTION. REV. MAIN TO CROSSOVER CONNECTION.	8/27/72	WJ
5	AS BUILT		

